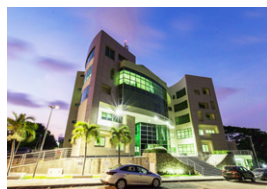




# SELECTED PROJECTS



Incept Architectural  
Consult





## SMALL RESIDENTIAL

Ats Iman | Martha's Twisted | Geomeris | Martha's Foursquare | The Ark

5



## LARGE RESIDENTIAL

Combert | Pedro's Place | Sethatt House | Ateenii Villa | Rwenzori

11



## MULTI-FAMILY

Lystra | Excelsior | Jade Court | Sapphire Court | Emerald Suites

17



## CORPORATE

Orel House | First Atlantic Bank Tamale | Emerald House | Heritage | First Atlantic Bank Ring Road

23



## INDUSTRIAL

Ederick Tamale | Prima Priforms & Closures Ltd | Toyota Head Office | MainOne Data Centre | Ederick Takoradi

29



## ECLECTIC

DTI Micro Campus | NYU Townhall | Eagle Monument | Kemsville | Serenity Beach House

35

*IAC, an award-winning architectural firm , constitutes well qualified and widely experienced architects and allied professionals of the built environment. We collaborate successfully with international professionals and other local firms to deliver projects on time and within budget.*

*Our cutting edge service culminates in unique and timeless solutions for a broad range of clients. Our mission is to create inspiring spaces that simultaneously provide function and shelter in ways that touch the spirit and leave the earth a better place.*

*we think people, we think value, we think of a ...*

*Life by Design*





The Golden Rule, within Architecture, is Art & Science, allowing Geometry witnessed in Nature. Urban, Phi, Sociology, Maths, History, Physics, Spirituality, Psychology, Feng Shui, Global, Local, International, Calculus of Aesthetics show Detail and Specificity of Structure, Form, Timelessness, and Modulus, Symmetry, within Aerodynamic, Ennoblement, Colour. Shaping the Culture and Sequence to Unique, Transformation of Purity to Life within the Galaxy gives Identity, and points towards an

Extreme Celestial Creator!

$$\frac{a+b}{b} = \frac{b}{a} = 1,61803...$$

# SMALL RESIDENTIAL

*"I try to create homes, not houses." - Louis Kahn*

---

Ats Iman

Martha's Twisted

Geomeris

Martha's Foursquare

The Ark



**Name: *Ats Iman***

**Location: *NTHC Estate, Ashaley Botwe***

**Size: *150 sqm***

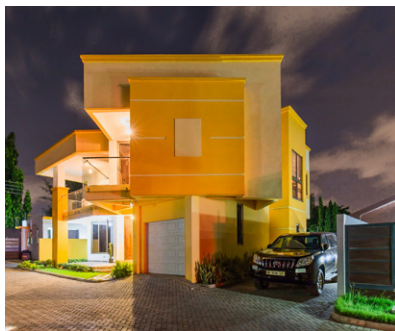
**Project team: *IAC, Genesis KKBC***

**Year: *2019***

*With all the considerations of modern living, this design is a testament to amazing space utilization and maximization of the given site; allowing for two well laid out ultra-effective family homes.*







**Name:** *Martha's Twisted*  
**Location:** *Airport Residential Area*  
**Size:** *250 sqm*  
**Project team:** *IAC, Ederick, ACEQ Consult*  
**Year:** *2015*

*With all the considerations to modern living, this design is a testament to achieving amazing space utilization with a striking architectural character.*



**Geomeris** - Airport Residential  
*Geometric forms coming together  
in harmony.*





Name: **Martha's Foursquare**

Location: **Airport Residential Area**

Size: **280 sqm**

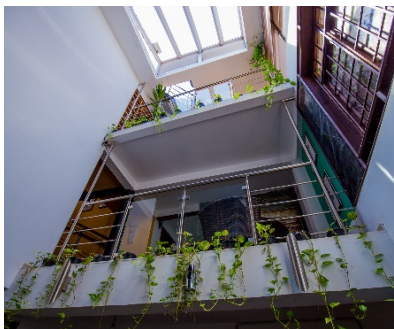
Project team: **IAC, Whirlpool, RSL Global**

Year: **2015**

*Designed with function as the utmost priority, this 3 bedroom makes great use of space within a small residential enclave.*







**Name: The Ark**  
**Location: NTHC Estate, Ashaley Botwe**  
**Size: 450 sqm**  
**Project team: IAC, ACEQ Consult**  
**Year: 2012**

*Creatively repurposed demolition waste come together to make this beautiful, unpredictable, exciting and dissolutely cozy three level home.*

# LARGE RESIDENTIAL

*"Every building must have... its own soul." - Alvar Aalto*

---

Combert

Pedros Place

Sethatt House

Ateenii Villa

Rwenzori





Name: **Combert**

Location : **Adenta**

Size: **650 sqm**

Project team: **IAC, ACEQ Consult**

Year: **2011**

*Typified by oriental features, the Combert home pays homage to Chinese architecture with a blend of African and European elements.*



**Name: Pedro's Place**

**Location: Labone**

**Size: 620 sqm**

**Project team: IAC, RSL Global, Ederick**

**Year: 2014**

*The ingenious use of clean sharp linear forms in varying shades of light and dark colours bring vibrancy and life to this sleek contemporary home.*





**SethAtt House - Tema**

*"The art of architecture studies not structure in itself but the effect of structure on the human spirit."*

**Geoffrey Scott**



*Name: **Ateenii Villa**  
 Location : **North Legon**  
 Size: **600 sqm**  
 Project team: **IAC, Casa Palladio**  
 Year: **2017***

*The purity of form with simple symmetry topped by positive white finishing gives this large home a subtle and welcoming experience.*





Name: **Rwenzori**

Location : **Akropong**

Size: **860 sqm**

Project team: **IAC, ACEQ Consult**

Year: **2016**

*The good building is not one that hurts the landscape, but one which makes the landscape more beautiful than it was before the building was built - Frank Lloyd Wright. The Rwenzori sits snugly on the mountain side with a large green backyard which blends in perfectly with the environment.*

# MULTI-FAMILY

*"The architect must get to know the people who will live in the planned house. From their needs, the rest inevitably follows." - Mies van der Rohe*

---

Lystra

Excelsior

Jade Court

Sapphire Court

Emerald Suites



Name: **Lystra**

Location : **NTHC Estate, Ashaley**

Size: **650 sqm**

Project team: **IAC, ACEQ Consult**

Year: **2018**

*This design is evident of careful space utilization which maximizes a small plot of land into compatible apartments with all the considerations of contemporary living thought through.*







**Name: *Excelsior***

**Location : *Airport Senchi Street***

**Size: *2000 sqm***

**Project team: *Belamos Construction, IAC***

**Year: *2014***

*Form interplayed with function gives the Excelsior not just the perfect character but also presents a remarkable means of stress relief within a bustling city with perfect views and cozy interiors.*

**Jade Court-** North Ridge  
*Beautiful, livable apartments  
created from a small space in  
a dense city.*







Name: **Sapphire Court**

Location: **Cantoments**

Size: **5700 sqm**

Project team: **IAC, Lencon, Unique Josap**

Year: **2016**

*Sapphire Court functions well as a self-dependent community of highly sought after homes with easy access to thriving businesses within the city.*







**Name: Emerald Suites**  
**Location: Cantoments**  
**Size: 5280 sqm**  
**Project team: IAC, Emerald, Unique Josap**  
**Year: 2018**

*As the ultimate hang out spot in contemporary apartment, Emerald suites rooftop pool packs several benefits, including great views, amazing ambiance, improved health and wellbeing amongst others.*

# CORPORATE

*"The difference between good and bad architecture is the time you spend on it." - David Chipperfield*

---

Orel House

FAB Tamale

Emerald House

Heritage

FAB Ring Road



Name: **Orel House**

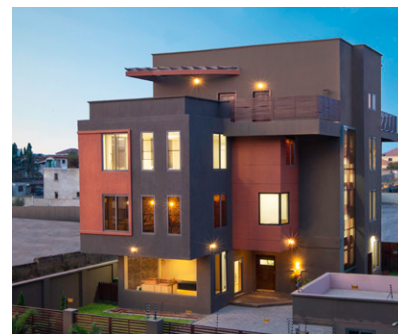
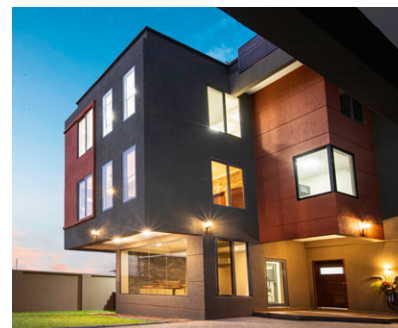
Location: **Labadi, Trade Fair**

Size: **614 sqm**

Project team: **IAC, OSJ, The Plant Place**

Year: **2018**

*The Orel house presents a flexible and clean design for the present with an awareness of the past while providing for a future that is not yet known.*







**Name : First Atlantic Bank**  
**Location : Tamale**  
**Size : 300 sqm**  
**Project team: IAC, Kaduna**  
**Year : 2018**

*A cozy and welcoming façade to complement the world class banking services brought to the doorstep to the Tamale community.*



***Emerald house - Roman Ridge***

*Function recreated in a quirky, artistic and one of the most beautiful ways yet. As idiosyncratic as the emerald, this office building inspires awe and a refreshing work experience.*





Name: **Heritage Bnk**  
 Location : **Dzorwulu**  
 Size: **480 sqm**  
 Project team: **IAC, ACEQ Consult**  
 Year: **2018**

*Navigating between aesthetics and purpose, we discover the fascination in architecture as an art form.*







**Name: First Atlantic Bank**  
**Location: Ring Road**  
**Size: 350 sqm**  
**Project team: IAC, Digital Innovations**  
**Year: 2017**

*Well-functioning spaces, cozy lounges, a beautiful façade and utmost priority for serenity are but a few of the merits this renovated building presents, giving a one old building a breath of fresh life.*

# INDUSTRIAL

*"I believe that the way people live can be directed a little by architecture." - Tadao Ando*

---

Ederick Tamale

Prima Priforms & Closures Ltd

Toyota Head Office

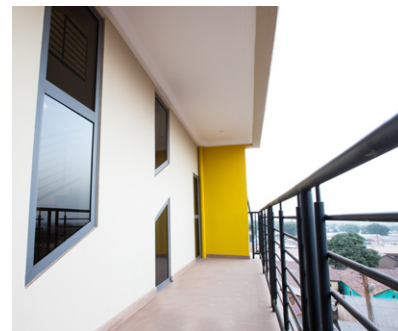
MainOne Data Centre

Ederick Takoradi



Name : **Ederick Place**  
 Location : **Tamale**  
 Size : **1600 sqm**  
 Project team : **IAC, John Rics, Ederick**  
 Year : **2019**

*Ederick Place is redefining the urban landscape of Tamale with its bold and stunning presence.*







**Name: Prima Preforms & Closures Ltd**

**Location: Tema Freezone Enclave**

**Size: 2000 sqm**

**Project team: IAC, Strandton, ARQ, Project Plus**

**Year: 2016**

*Embodying the face of contemporary industrial design, this factory building is designed with security, safety, function and flexibility as key positives.*



**City Construction &  
Properties Awards 2019**  
Commercial Building  
Retail

***Toyota Ghana Ltd - Tema***

*With its strong presence characterized by bold forms and colours, the Toyota head office expands our sense of what “industrial building” means.*







**Name: MainOne Data Centre**

**Location: Appolonia City**

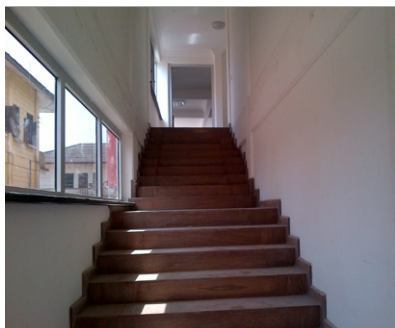
**Size: 1070 sqm**

**Project team: IAC, Strandton, Yawson and Lombard, ARQ**

**Year: 2021**

*As a branch of the largest data services provider in West Africa, the Main One building is designed with a strong focus on high availability, security and open access connectivity, helping to advance the digitization efforts of customers, both local and multinational.*





**Name: Ederick Place**  
**Location: Takoradi**  
**Size: 1200 sqm**  
**Project team: IAC, John Rics, ACEQ Consult**  
**Year: 2014**

*The unassuming façade of this warehouse building makes it a welcome feature on the commercial structure of urban Takoradi.*

# ECLECTIC

*"If you weren't an optimist, it would be impossible to be an architect." - Norman Foster*

---

DTI Micro Campus

NYU Townhall

Eagle Monument

Kemsville By The Sea

Serenity Beach House



Name: **DTI Micro Campus**  
 Location: **Mempeasem, East Legon**  
 Size: **1062 sqm**  
 Project team: **IAC, Accents & Arts**  
 Year: **2019**

*This educational facility is the perfect model of sustainability waste materials repurposed into function recreated in a quirky, artistic and one of the most beautiful ways yet.*





**Name:** NYU Townhall  
**Location:** Kumawhu  
**Size:** 550 sqm  
**Project team:** IAC, ACEQ Consult  
**Year:** 2015

*Designed to effectively serve and support a local farming community, the NYU townhall is designed with the flexibility to host a wide variant of activities.*





**Trinity Square - Miotso, Prampram**

*Working with artist Constance Swaniker,  
the sculpted eagle is surrounded by a  
fountain of 66 spouts of biblical water.*







**Name : Kemsville by the Sea**

**Location : Kokrobite**

**Size:- 150 sqm**

**Project team:- IAC**

**Year:- 2005**

*This cozy holiday home features the amazing possibilities of rejuvenating reclaimed materials for the most beautiful outcomes. Salvaged wood accentuated by immaculate white walls and features makes living a dreamy experience.*





**Name:** *Serenity Beach House*  
**Location:** *kokrobite*  
**Size:** *1200 sqm*  
**Project team:** *IAC, Messrs Serenity, IAC*  
**Year:** *2019*

*This beautiful time-shared facility has everything that makes for a perfect holiday getaway. From private roof terraces with outdoor tubs, amazing views to the sea, bespoke spa treatment and natural coastal beauty... serenity is the hallmark of contemporary excellence by the sea.*

# PARTNERS

*"Alone we can do so little; together we can  
do so much." - Helen Keller*



Ederick Ltd/ Whirlpool  
www.ederickltd.com



First Atlantic Bank  
www.firstatlanticbank.com.gh



ADK consortium  
www.adk-consortium.com



Kaleidoscope  
www.Kaleidoscope .com



Gloriana Properties  
www.glorianproperties.com



Kaiser Kitchens  
www.kaiser.com.gh



Genesis Kitchens  
www.genesiskbbc.com



Emerald Properties  
www.emeraldpropertiesgh.com



Unique Josap  
www.uniquejosapeng.com



Ederic Group  
www.edric.group



ARQ Engineering Solutions  
www.arq.co.za



Strandton Ltd.  
www.strandton.com



L'atelier



Jaquar  
www.jaquar.com



Raincoat  
www.raincoatroofingsystems.com



Accents and Arts  
https://www.accents-art.com



Haiflow  
www.haiflow.com



Casa Palladio  
www.casapalladio.com



Water Features  
www.fflwaterfeatures.com



House of Makeye  
www.houseofmakeye.com





Greenscape Consult Ltd



ACEQ Consult



Kadna Construction & Engineering  
www.kadnaengineering.com



Toyota  
www.toyotaghana.com



Kia motors  
www.kia.com/eu



Battis construction  
www.construction.battisgroup.com.gh



RSL Global Limited



Oswal Investments Limited  
www.oswalinvestments.com



Lemons 2 Lemonade



The Plant Place  
www.theplantplacegh.com



Branect Consult  
www.branectconsult.com



Project Plus Consult



Bespoke Living  
www.bespokeliving.com



DS Construction Limited  
www.dscons-gh.com



ESPCo Engineering Services  
Provision Company Ltd  
www.theplantplacegh.com



FBM Marble & Granite



BG Builders  
www.bgbuildersgh.com



Regimanuel Gray Limited  
www.regimanuelgray.com



Hydrotech Services LTD



Atlantic Climate Control Ltd  
www.atlantic-climate.com

Email: [info@inceptlimited.com](mailto:info@inceptlimited.com)

